



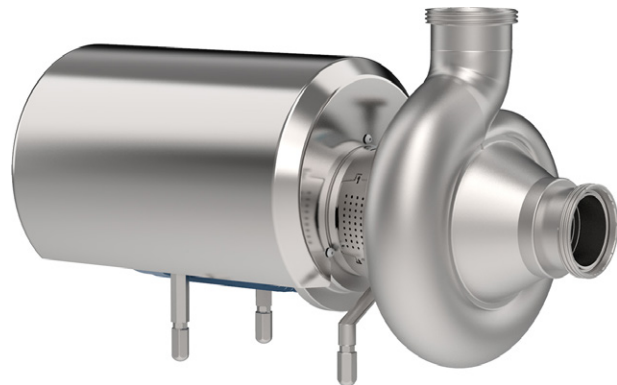
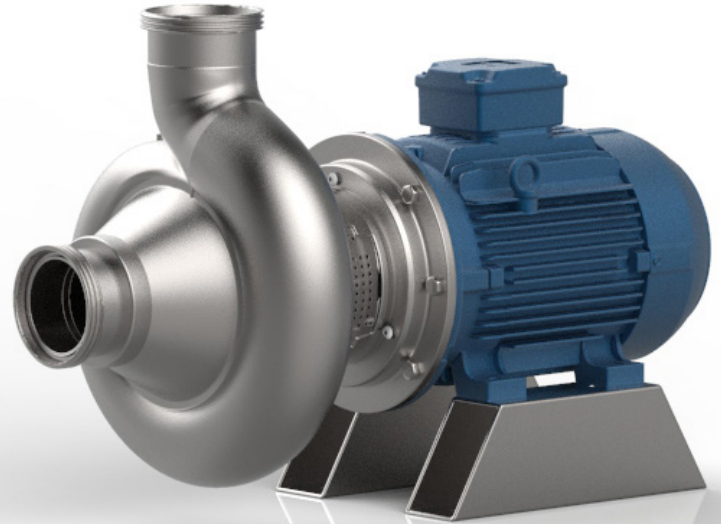
## SANITARY CENTRIFUGAL PUMPS

### CR series



Centrifugal pumps incorporating a special auger type screw shaped impeller, which is ideal for the gentle handling of very delicate fluids and large soft solids in suspension. Wetted parts in investment cast CF-3M 1.4404 / AISI 316L stainless steel, electro-chemically polished to ensure the perfect surface finish. Separate IEC standard motor. Stainless steel shroud and adjustable feet on request. The clamp casing and seal design allows quick disassembly for inspection, cleaning and maintenance. It also enables the delivery port to be rotated to any position for easy installation.

*Delicate handling without clogging.*  
The CR Series has been designed for very gentle handling of sensitive media at extremely low flow velocities.



CR pump with shroud

*The screw shape impeller combines the properties of a centrifugal pump with the delicate characteristics of a positive displacement pump. The ability to handle high solids products in an extremely gentle way makes CR Series pumps ideal for food processing: Fruit and vegetable handling, soups and sauces, cereals, fish transportation, food pastes, oil, wine recirculation.*

#### TECHNICAL DATA

Flow rates up to 150 m<sup>3</sup>/h  
Heads up to 20 m  
Maximum operating pressure 10 bar up to 100°C  
Temperature range -10°+ +100°

#### Mechanical seals:

With seats to EN 12756, ISO 3069 standards.  
Single internal mechanical seal  
Single external mechanical seal  
Double flushed mechanical seal

#### Elastomers (FDA Regulation (EC) No. 1935/2004):

Nitrile (NBR)  
Ethylene propylene (EPDM)  
Fluorocarbon seal (FPM - FKM)  
FEP  
FFPM - FFKM  
Silicone

#### Connections:

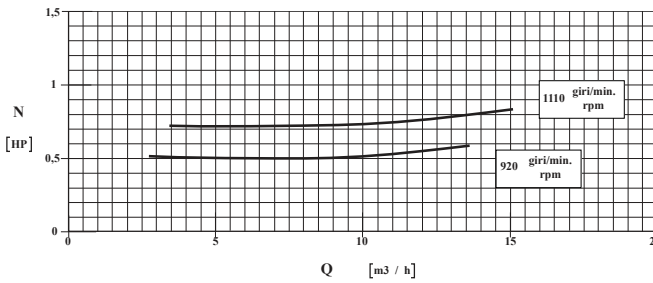
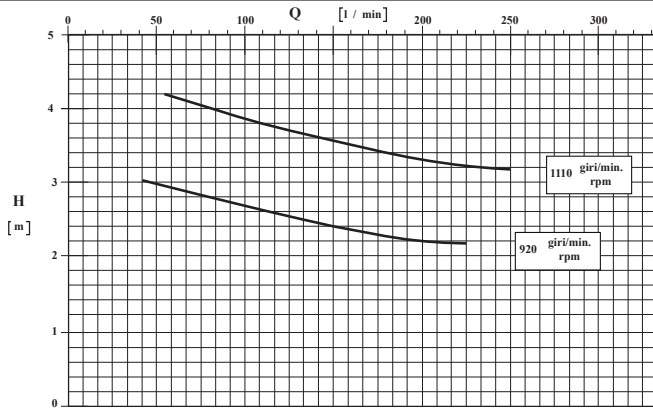
DIN - SMS - IDF - BS / RJT - DS - CLAMP and  
EN1092-1 PN16 flanges suitable for all international standards.



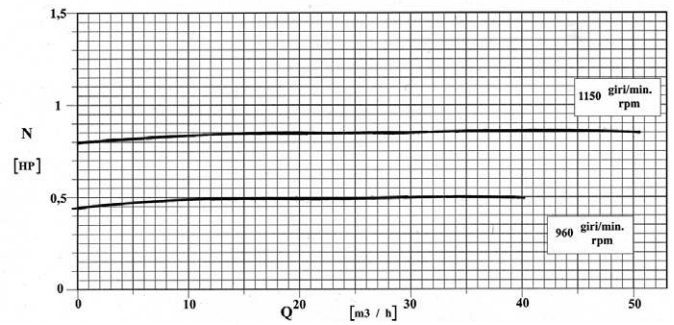
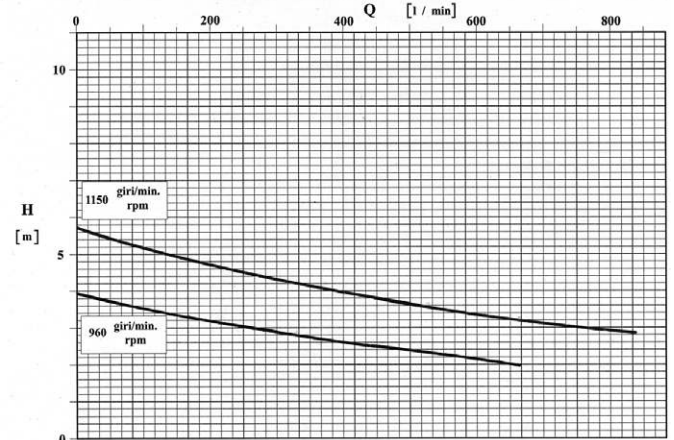
## GENERAL DIAGRAMS

(Performance applies to H<sub>2</sub>O at 20 °C, 1013 mbar, Data not binding)

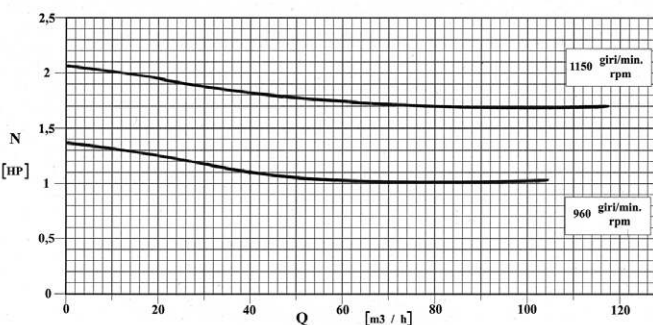
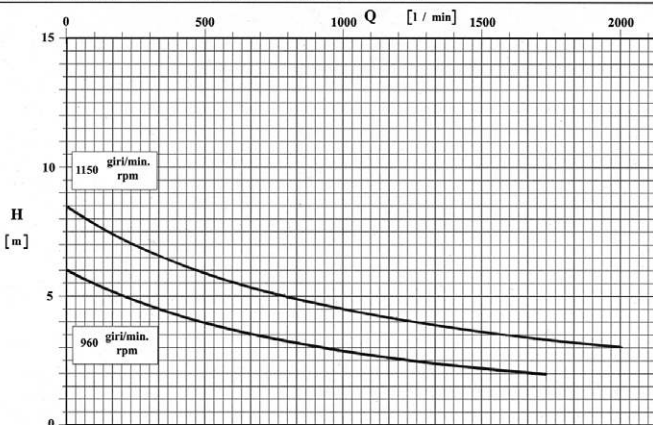
<b>POMPA TIPO</b> Pump type		<b>CR 65</b>			n <b>920/1110</b> giri / min r. p. m.	
GIRANTE — Impeller						
TIPO Type	N° di pale n° of vanes	Pass. sferico max. sphere	Ø max max. diameter	Ø min min. diameter	Bocche tipo Ports type	Bocca aspir. Suction port DN <b>65</b>
APERTA	1 Elica	33 mm	156 mm	— mm	DIN 11851	Bocca mand. Discharge port DN <b>65</b>
CARATTERISTICHE DI FUNZIONAMENTO CON ACQUA PULITA A 20°C - PESO SPECIFICO 1 (kg/dm <sup>3</sup> ) Curves show performance with clear water at 70°F - Specific gravity 1 (kg/dm <sup>3</sup> )						



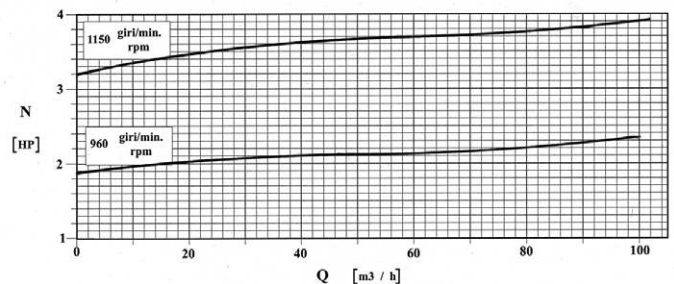
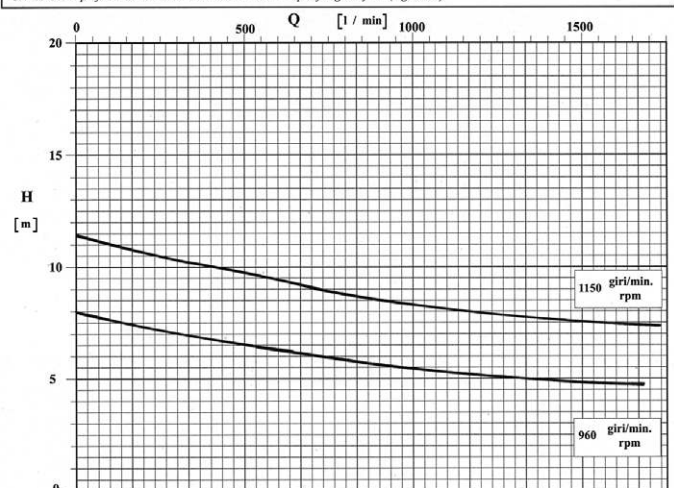
<b>POMPA TIPO</b> Pump type		<b>CR 80</b>			n <b>960/1150</b> giri / min r. p. m.	
GIRANTE — Impeller						
TIPO Type	N° di pale n° of vanes	Pass. sferico max. sphere	Ø max max. diameter	Ø min min. diameter	Bocche tipo Ports type	Bocca aspir. Suction port DN <b>80</b>
APERTA	1 Elica	45 mm	178 mm	— mm	DIN 11851	Bocca mand. Discharge port DN <b>80</b>
CARATTERISTICHE DI FUNZIONAMENTO CON ACQUA PULITA A 20°C - PESO SPECIFICO 1 (kg/dm <sup>3</sup> ) Curves show performance with clear water at 70°F - Specific gravity 1 (kg/dm <sup>3</sup> )						



<b>POMPA TIPO</b> Pump type		<b>CR 100</b>			n <b>960/1150</b> giri / min r. p. m.	
GIRANTE — Impeller						
TIPO Type	N° di pale n° of vanes	Pass. sferico max. sphere	Ø max max. diameter	Ø min min. diameter	Bocche tipo Ports type	Bocca aspir. Suction port DN <b>100</b>
APERTA	1 Elica	58 mm	210 mm	— mm	DIN 11851	Bocca mand. Discharge port DN <b>100</b>
CARATTERISTICHE DI FUNZIONAMENTO CON ACQUA PULITA A 20°C - PESO SPECIFICO 1 (kg/dm <sup>3</sup> ) Curves show performance with clear water at 70°F - Specific gravity 1 (kg/dm <sup>3</sup> )						

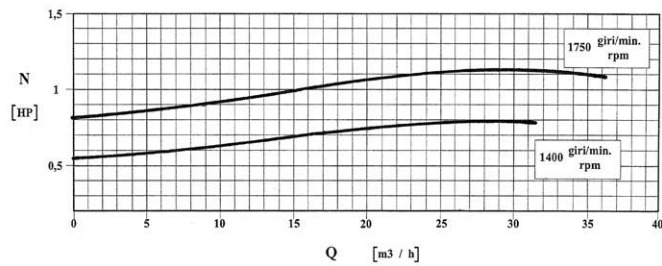
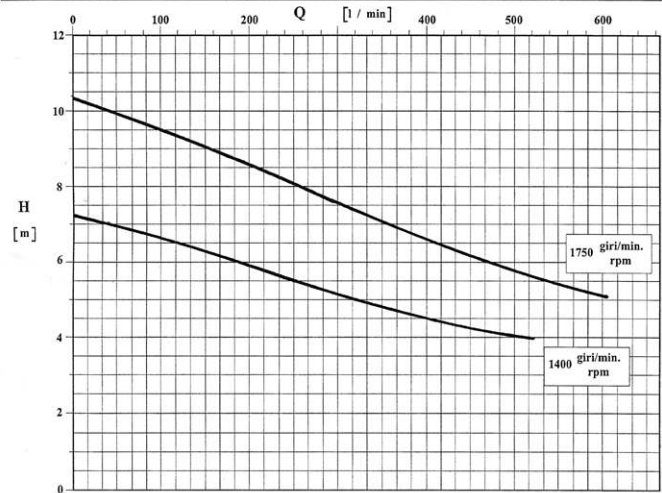


<b>POMPA TIPO</b> Pump type		<b>CR 125</b>			n <b>960/1150</b> giri / min r. p. m.	
GIRANTE — Impeller						
TIPO Type	N° di pale n° of vanes	Pass. sferico max. sphere	Ø max max. diameter	Ø min min. diameter	Bocche tipo Ports type	Bocca aspir. Suction port DN <b>125</b>
APERTA	1 Elica	63 mm	260 mm	— mm	DIN 11851	Bocca mand. Discharge port DN <b>125</b>
CARATTERISTICHE DI FUNZIONAMENTO CON ACQUA PULITA A 20°C - PESO SPECIFICO 1 (kg/dm <sup>3</sup> ) Curves show performance with clear water at 70°F - Specific gravity 1 (kg/dm <sup>3</sup> )						

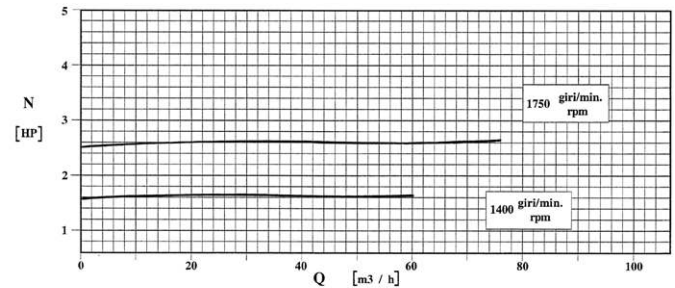
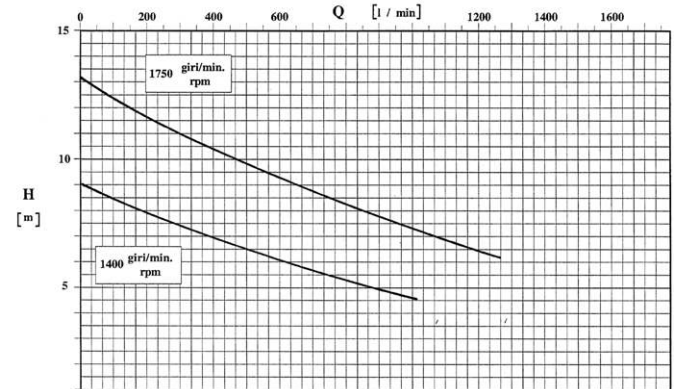




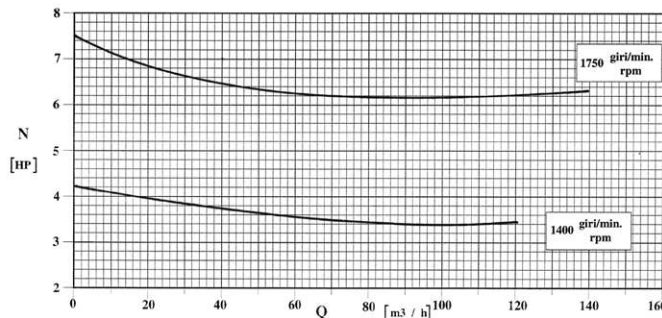
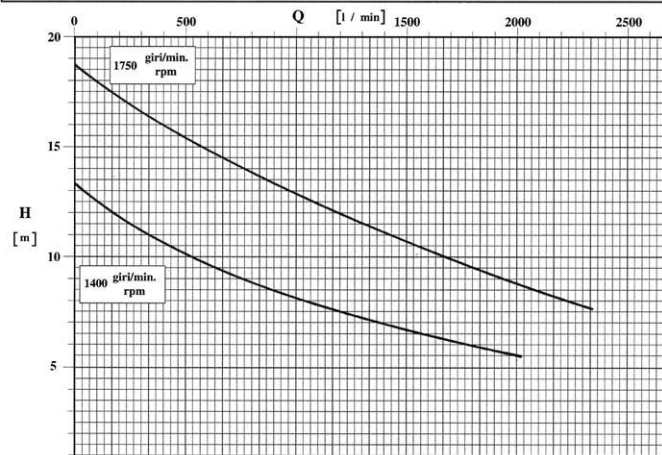
<b>POMPA TIPO</b>		<b>CR 65</b>			<b>n 1400/1750</b> giri / min r. p. m.	
GIRANTE — Impeller						
TIPO Type	N° di pale n° of vanes	Pass. sferico max. sphere	Ø max max. diameter	Ø min min. diameter	Bocche tipo Ports type	Bocca aspir. Suction port DN 65
APERTA	1 Elica	33 mm	156 mm	---	DIN 11851	Bocca mand. Discharge port DN 65
CARATTERISTICHE DI FUNZIONAMENTO CON ACQUA PULITA A 20°C - PESO SPECIFICO 1 (kg/dm <sup>3</sup> ) Curves show performance with clear water at 70°F - Specific gravity 1 (kg/dm <sup>3</sup> )						



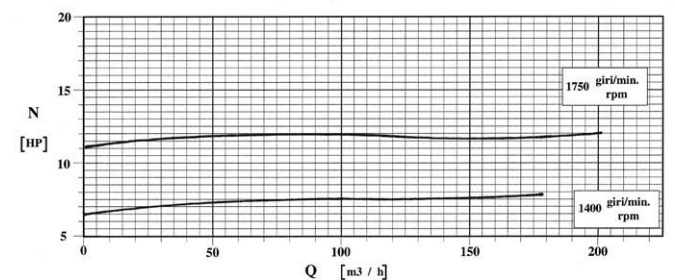
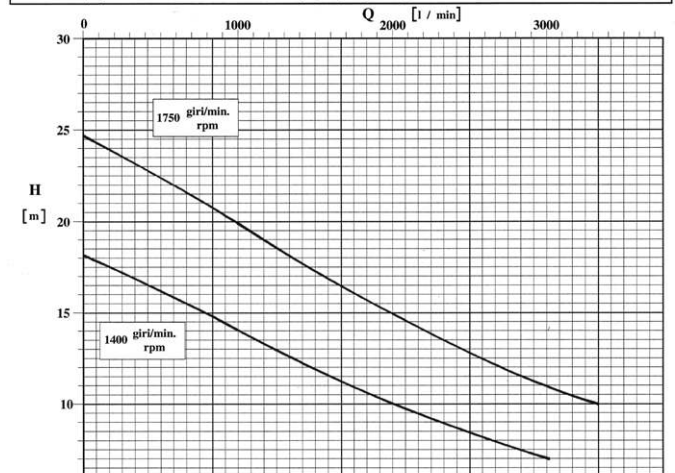
<b>POMPA TIPO</b>		<b>CR 80</b>			<b>n 1450/1750</b> giri / min r. p. m.	
GIRANTE — Impeller						
TIPO Type	N° di pale n° of vanes	Pass. sferico max. sphere	Ø max max. diameter	Ø min min. diameter	Bocche tipo Ports type	Bocca aspir. Suction port DN 80
APERTA	1 Elica	45 mm	178 mm	---	DIN 11851	Bocca mand. Discharge port DN 80
CARATTERISTICHE DI FUNZIONAMENTO CON ACQUA PULITA A 20°C - PESO SPECIFICO 1 (kg/dm <sup>3</sup> ) Curves show performance with clear water at 70°F - Specific gravity 1 (kg/dm <sup>3</sup> )						



<b>POMPA TIPO</b>		<b>CR 100</b>			<b>n 1450/1750</b> giri / min r. p. m.	
GIRANTE — Impeller						
TIPO Type	N° di pale n° of vanes	Pass. sferico max. sphere	Ø max max. diameter	Ø min min. diameter	Bocche tipo Ports type	Bocca aspir. Suction port DN 100
APERTA	1 Elica	58 mm	210 mm	---	DIN 11851	Bocca mand. Discharge port DN 100
CARATTERISTICHE DI FUNZIONAMENTO CON ACQUA PULITA A 20°C - PESO SPECIFICO 1 (kg/dm <sup>3</sup> ) Curves show performance with clear water at 70°F - Specific gravity 1 (kg/dm <sup>3</sup> )						

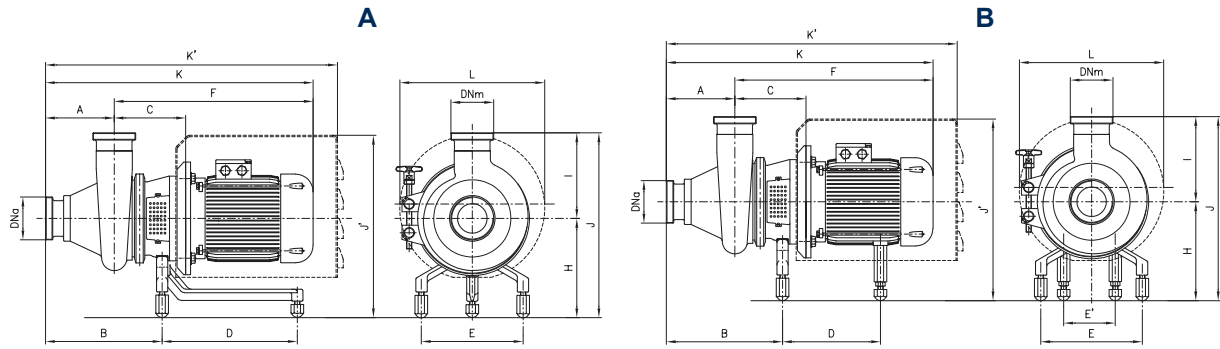


<b>POMPA TIPO</b>		<b>CR 125</b>			<b>n 1450/1750</b> giri / min r. p. m.	
GIRANTE — Impeller						
TIPO Type	N° di pale n° of vanes	Pass. sferico max. sphere	Ø max max. diameter	Ø min min. diameter	Bocche tipo Ports type	Bocca aspir. Suction port DN 125
APERTA	1 Elica	63 mm	260 mm	---	DIN 11851	Bocca mand. Discharge port DN 125
CARATTERISTICHE DI FUNZIONAMENTO CON ACQUA PULITA A 20°C - PESO SPECIFICO 1 (kg/dm <sup>3</sup> ) Curves show performance with clear water at 70°F - Specific gravity 1 (kg/dm <sup>3</sup> )						



## OVERALL DIMENSIONS

Dimensions not binding - DN = DIN 11851 male threaded connections, with standard IEC/EN motors

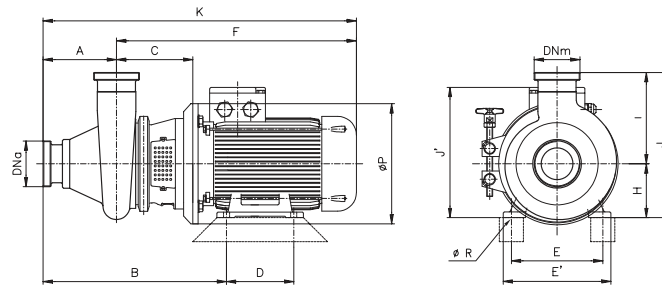


A = motors from 0,55 kW to 4 kW

Pump type	1450 rpm	kW	DNa	DNm	A	B	C	D	E	E'	F	H	K	K'	I	J	J'	L						
CR 65		0,55	65	65	151	257	158	230	225	-	-	392	208	543	657	190	398	374	302					
	0,75	437										588												
	1,1	452										213		632						699	245	458	379	302
	1,5																							
CR 80	1,1	80	80	181	297	168	300	225	-	-	452	230	632	767	245	475	435	330						
	1,5										508		690											
	2,2										536		238						741	824	296	534	443	330
	3																							
4																								
CR 100	2,2	100	100	205	337	202	300	225	-	-	536	238	741	824	296	534	443	330						
	3										536		741											
	3										536		238						741	824	296	534	443	330
	4																							

B = motors from 5,5 kW to 15 kW

Pump type	1450 rpm	kW	DNa	DNm	A	B	C	D	E	E'	F	H	K	K'	I	J	J'	L					
CR 100		5,5	100	100	205	205	325	204	283	225	180	576	238	784	848	294	526	460	370				
	7,5	326					249	408	230		727	247	932	1105	532					510	370		
	11	370					230	292	225		180	604	238	836	900					346	584	501	430
	15																						
CR 125	5,5	125	125	232	370	230	292	225	-	-	180	604	238	836	900	346	584	501	430				
	7,5										230	748	247	980	1035					593	510		
	11										230	748	247	980	1035					593	510	430	
	15																						



Pump type	1450 rpm	kW	DNa	DNm	A	B	C	D	E	E'	F	H	K	I	J	J'	ØP	ØR												
CR 65		0,55	65	65	151	360	158	100	125	150	392	80	543	190	270	200	200	10												
	0,75	362																	140	165	437	90	588	280	218	200				
	1,1	406																	125	140	165	452	90	632	245	335	218	200	10	
	1,5																													
CR 80	1,1	80	80	181	413	168	140	190	226	502	112	684	245	357	260	250	12													
	1,5																	477	202	140	190	240	515	112	720	294	406	331	250	12
	2,2																													
	3																	413	190	226	502	112	684	357	260	250	12			
CR 100	2,2	100	100	205	497	202	178	216	256	576	132	781	294	426	299	300	12													
	3																	570	257	210	190	240	734	160	937	294	454	357	350	15
	4																													
	5,5																	190	240	515	112	720	406	331	250	12				
CR 125	5,5	125	125	232	550	230	140	216	256	604	132	836	346	478	404	300	12													
	7,5																	610	270	210	254	300	748	160	980	346	506	432	350	15
	11																													
	15																	178	216	256	604	132	836	346	506	432	350	15		



C.S.F. Inox S.p.A. Strada per Bibbiano, 7 - 42027 Montecchio E. (RE) - ITALY EU

Ph +39.0522.869911 r.a. - Fx +39.0522.865454 - italia@csf.it - www.csf.it

Export Department • Commercial Étranger • Comercial Extranjero

Ph +39.0522.869922 - Fx +39.0522.869841 - export@csf.it - www.csf.it



All the instructions, data and representations (in whatever way executed) listed in this publication are indicative and do not binding. C.S.F. does not stand surely or undertake any obligation for the utilisation of this document and for the information contained. In particular, it does not guarantee against omissions or errors of the data and drawings here indicated. Notice that the technical specifications, information and representations in this document are merely indicative and approximate. C.S.F. INOX reserves the right at any moment and without notice to modify the data, drawings and information indicated in this document.