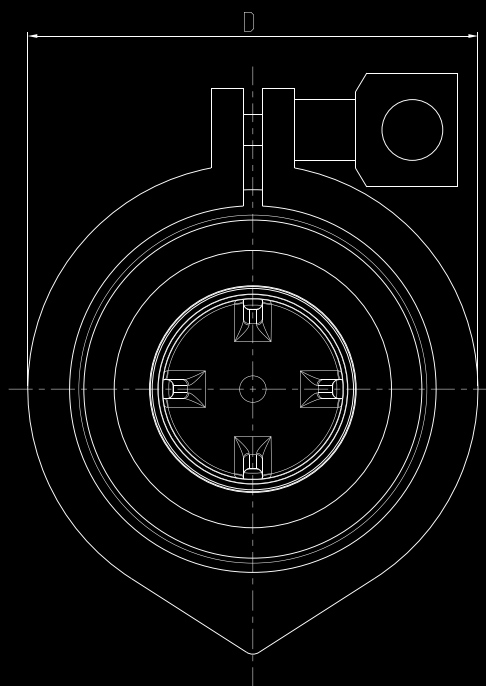
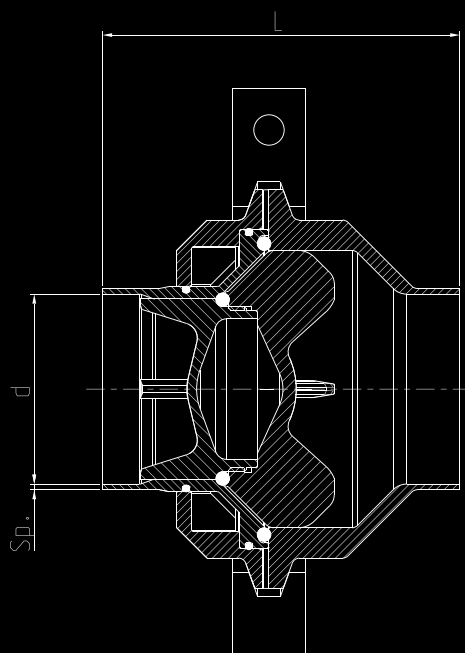


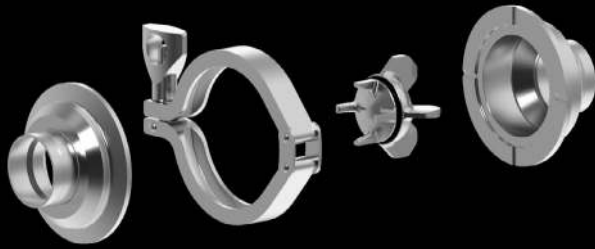
# YEV

## TECHNICAL DATA - WELDING ENDS



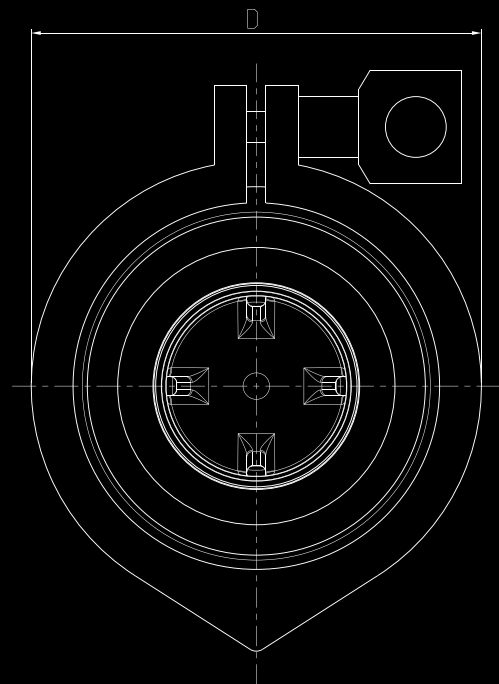
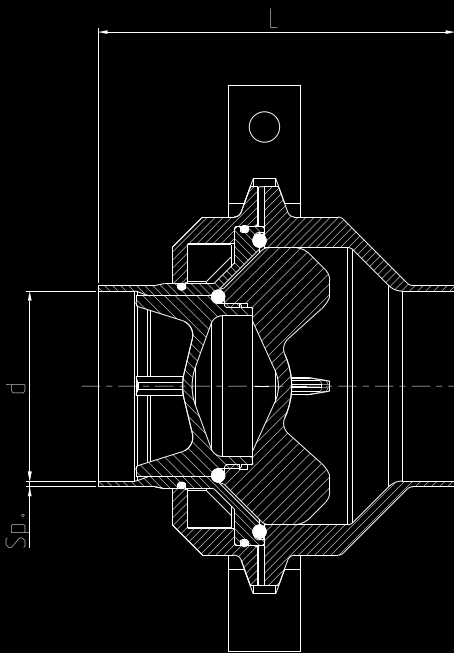
DIN 11850 (DIN 11866 Reihe A) > R

Dimension	L (mm)	D(mm)	d(mm)	Sp (mm)	Weight(kg)
<b>DN15</b>	54	62,5	16	1,5	0,4
<b>DN25</b>	59,5	72	26	1,5	0,7
<b>DN40</b>	76	100	38	1,5	0,9
<b>DN50</b>	94	118,5	50	1,5	1,5
<b>DN65</b>	114,5	138	66	2	3,5
<b>DN80</b>	139,5	166	81	2	5,5
<b>DN100</b>	150,5	178	100	2	6,8



# YEV

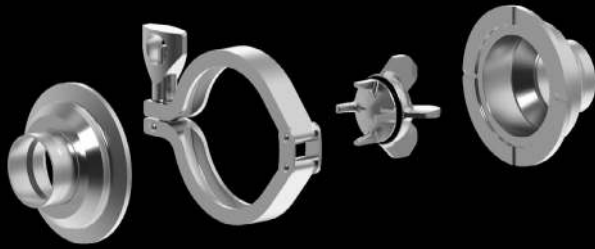
## TECHNICAL DATA - WELDING ENDS



ASME BPE (DIN 11866 Reihe C) > T

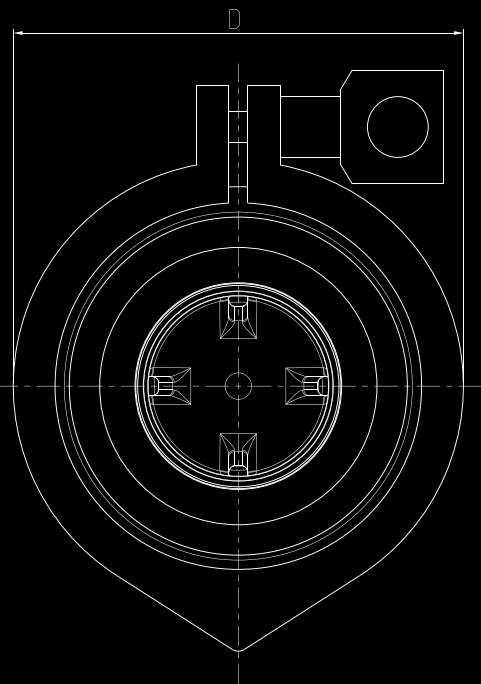
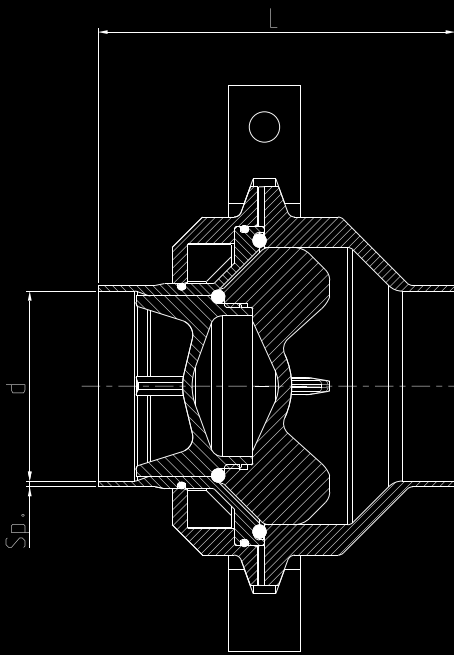
Dimension	L (mm)	D(mm)	d(mm)	Sp (mm)	Weight(kg)
¾"	54	62,5	15,75	1,65	0,4
1"	62,5	72	22,1	1,65	0,7
1-1/2"	76	100	34,8	1,65	0,9
2"	94	118,5	47,5	1,65	1,5
2-1/2"	114,5	138	60,2	1,65	3,5
3"	139,5	166	72,9	1,65	5,5
4"	150,5	178	97,38	2,11	6,8

**YGROS**  
VALVES



# YEV

## TECHNICAL DATA - WELDING ENDS



ASME BPE > C

Dimension	L (mm)	D(mm)	d(mm)	Weight(kg)
¾"	79,4	62,5	15,7	0,5
1"	87,9	72	22,1	0,9
1-1/2"	101,4	100	34,8	1,5
2"	119,4	118,5	47,5	2,4
2-1/2"	139,9	138	60,2	3,7
3"	164,9	166	72,9	5,9
4"	182,1	178	97,4	7

